



Creating Opportunities for Today's Students  
Tomorrow's Leaders



# Message from the Chair

Now more than ever, our Missouri College Fund schools need your support.

Having worked at one of our member institutions for over 23 years, I had the opportunity to see first-hand the difference our member schools make for our students, our employers and our communities. The education, both in and outside the classroom, impacts students for a lifetime.

The support of our students and schools is even more important now as institutions continue to deal with the uncertainty of a Covid world. Our schools have done an excellent job adjusting to the pandemic with creative teaching solutions, continued safety measures and engagement strategies to ensure a positive learning environment for their students. It hasn't been easy, but they have stepped up to the plate.

As we celebrate 70 years of the Missouri Colleges Fund, we look to continuing our mission to acquire resources to help educate students and offer even more scholarships for our future leaders.

We want to congratulate Mike Backer on his retirement and thank him for serving as President since 2005 and raising over \$8.7 million to help our students achieve their dreams. We also welcome our new President, Susan Stegeman, who comes to us with extensive non-profit and fundraising experience. She is a proud graduate of one of our member institutions and has hit the ground running.

Your gift strengthens the ability of our member institutions to educate talented students regardless of financial circumstances, to provide challenging programs and to help students achieve their goals.

Thank you for your support.



Sincerely,

*Kris Lensmeyer*

Kris Lensmeyer, Board Chair

## 16 Member Missouri Colleges Fund Economic Impact 2021:

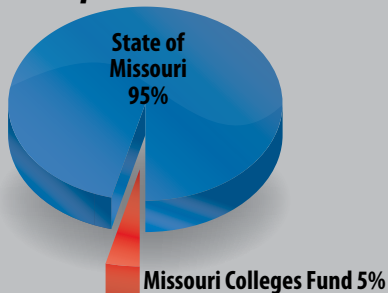
**Colleges & Universities**  
8,205 employees

**Generates Economic Activity**  
\$4.6 Billion

**Undergraduate Enrollment**  
67,669 students

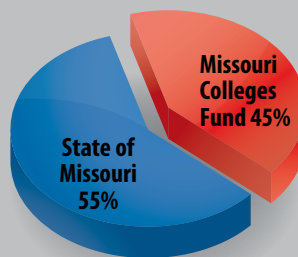
## A Greater Proportion of Missouri's Degrees: The 5-45-65 Equation

**Share of State Tuition Expenditures**



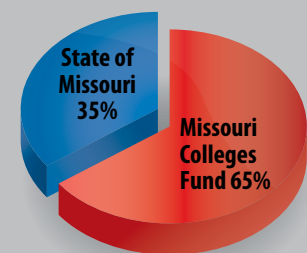
Students with financial need at MCF campuses receive less than 5 percent of the state's tuition expenditures.

**Share of Full-Time Undergraduate Enrollment**



Overall, MCF campuses enroll 45 percent of all undergraduates in Missouri.

**Share of Bachelor's Degrees Awarded**



MCF campuses produces 65 percent of all bachelor's degrees awarded in the state.

## Private Colleges Work Hard To Help Students Succeed.

### FIRST GENERATIONS STUDENTS ARE MORE LIKELY TO GRADUATE FROM PRIVATE COLLEGES

**70%** graduated from private colleges within 6 years

**57%** graduated from public universities within 6 years

### EMPLOYERS WANT LIBERAL ARTS KNOWLEDGE

**80%** of employers think every student should acquire broad knowledge in the liberal arts

### PRIVATE COLLEGE GRADUATES FINISH ON TIME

**59%** of graduates of smaller private colleges finish within 4 years

**38%** of graduates of regional public universities finish within 4 years

### PRIVATE COLLEGES AWARD 3X LARGER GRANTS

**\$14,826**

awarded on average per student at private colleges

**\$4,765**

awarded on average per student at public universities

### LIBERAL ARTS STUDENTS ARE ENGAGED CITIZENS

**77%** of 18-24 year-old private college students are registered to vote

**53%** of 18-24 year-olds who do not attend private colleges are registered to vote

### PRIVATE COLLEGES AWARD 2X MORE GRANTS

**80%** of students at private colleges receive grants

**40%** of students at public universities receive grants



*Mica Pledger is a senior at Avila University. She is studying science with an emphasis in Biology. At Avila, she is a work study supervisor and involved in the campus ministry. "Once I graduate I hope to work at a hospital in some sort of research capacity."*



*Verlyn Johnson is a junior at Culver-Stockton College, majoring in Physical Education. He is from Vandalia, Missouri and attended Van-Far High School. Verlyn is a member of the Men's Track and Field Team. "I intend to start my career at a small high school as P.E. teacher and coach athletics as well."*



*Jasmine "Jas" Stewart is a freshman Medical Laboratory Science major at Maryville University. Jasmine also works full time at a toxicology lab in the evenings along with attending college and being a single parent. "My goal after graduation is to become a pathologist so I can help others live healthy lives."*

# Profile of the Missouri Colleges Fund, Inc.

## **Mission**

The Mission of the Missouri Colleges Fund is to acquire resources to help educate students in member independent/private, four year, liberal-arts colleges and universities.

## **History and Purpose**

The Missouri Colleges Fund (MCF) was incorporated in 1952 as a partnership of private enterprise, entrepreneurs, and the member independent colleges and universities in the Show-Me State. For 69 years, MCF has been a leader in building communications among its member institutions and partners with businesses and foundations that mobilize collaboration and financial support. It enables these institutions to accomplish more through this joint effort than they might acting individually.

## **Gifts Go Directly to Support Students**

The member institutions unrestricted support from the MCF is used for need-based financial aid for qualified students unless otherwise directed by the donor. Recipients of these scholarships are selected by the member colleges, not by the Fund.

## **Membership**

The member schools are independent baccalaureate degree-granting liberal arts and comprehensive colleges and universities in the State of Missouri, accredited by the Higher Learning Commission of the North Central Association of Colleges and Schools.

## **Distribution of Funds**

Undesignated funds are distributed equally to member institutions. The MCF accepts contributions designated for one or more institutions and distributes gifts in accordance with the donor's wishes.

## **Legal and Tax Status**

The MCF was formed in 1952 as a non-profit corporation. The fund is classified as a public charity under section 509(a) (2) of the Internal Revenue Code and is a 501(c) (3) tax-exempt organization. All contributions to the fund are tax-deductible up to the limits prescribed by the law. Our Federal ID Number is 43-0680952.

## **Solicitors**

Business members of the Board, college presidents and chief development officers make solicitation calls on behalf of the MCF without compensation from the Fund.

## **Diversity Statement**

The MCF is committed to a policy of non-discrimination and equal opportunity in hiring and administrating all its programs. The fund does not discriminate based on race, religion, color, national origin, gender, sexual orientation, age, disability or on any other basis that would be in violate any applicable federal or state law.

## **Operating Budget**

The Board of Directors approves a budget underwritten by equal assessments paid by each members institution. Gifts to the fund are not used for the administration of the fund.

## **Annual Audit**

Our fiscal year is January 1 through December 31. The financial records are audited annually by Graves and Associates, CPA's, of Jefferson City.

## **National Affiliation**

The MCF is affiliated with the *Council of Independent Colleges* which is a national partner in a network of member state and regional associations that represent more than 650 private colleges and universities.



*Timothy Jurado is a freshman and enrolled in the Business program at Central Methodist University. He is also hoping to study Psychology while at CMU. Timothy is a member of the Central Methodist University Men's Soccer team. "I plan to study business and psychology and hope to own my own business after I graduate."*

# GIVING OPPORTUNITIES

## Unrestricted Gifts

Unrestricted gifts have played an essential role in our colleges and universities since the founding of the Missouri Colleges Fund in 1952. These important gifts have a profound impact on the ability of our institutions to meet their changing needs.

All undesignated funds are used by member colleges and universities to provide need-based financial aid for students.

## Teachers First Scholars Program

For the past twenty years, many school districts in Missouri have been faced with a critical teacher shortage due primarily to record retirements of experienced teachers. The independent member colleges of the Missouri Colleges Fund are excelling in their efforts to respond by graduating properly certified teachers ready to take their place in the elementary and secondary schools in Missouri.

Since 1998, the TEACHERS FIRST Scholars Program has raised more than \$6 million for need-based financial aid to outstanding students who are returning to the classroom to teach in areas of child and family education, special education, elementary, middle school, and secondary education.

## STEM Scholars Program

Studies reveal that most eighth and tenth-grade students in Missouri score lower than proficient in math and science.

The goal of the Missouri Math and Science Scholars Coalition is to make Missouri a national leader in math, engineering, technology, and science education. Since World War II, math, science, and technology have been responsible for more than half of America's economic growth.

The STEM Scholars Program raises financial aid to underwrite math, technology, engineering, and science scholarships at our member institutions.

## First Opportunity Scholars Program

During the next several decades, the United States will experience a major demographic shift affecting college enrollments and corporate employment. By 2050, the population will reach nearly 400 million people, with new immigrants and their children accounting for approximately 80 percent of that growth.

As the nation's demographics change, there will be a significant and increasing number of low-income, first-generation, minority, and new American students enrolling in college and preparing for the workforce. The First Opportunity Scholars Program aims to foster increased college access and financial aid for these students.



*Rylee Kempker is a sophomore accounting major at Westminster College. On campus she is a member of the sorority Kappa Alpha Theta where she participates in philanthropy events. She graduated high school with 35 college credit hours. "After graduation I plan to find a job at an accounting firm."*



*Jake Sun is a senior at Lindenwood University majoring in Biological Sciences. He is a President's Ambassador, and a member of the National Honor Society of Leadership and Success. "Upon completion of my degree, Lindenwood will have prepared me for advancing my education in medical school. As a future physician, building a close relationship with patients is my number one priority."*

# Thank You to our 2021 Corporate Partners







**Dezirae Alviso** attends William Woods University. She is a sophomore Equestrian Science major from Sacramento, California. "Growing up, my parents would do everything to give their children what they desired and make them happy. I feel it is my job to help them by providing as much funding for my education as possible."



**Daniel Suarez** is attending Rockhurst University, majoring in Electrical Engineering. He is a member of the Avila Cross Country team, Alpha Phi Omega, Move-In Crew, and a Rockhurst Character Ambassador. "I hope to graduate from Rockhurst University and enjoy a long career in Electrical Engineering."



**Carson Turner** attends Hannibal LaGrange University and is a sophomore majoring in Computer Science: Cyber Security. Carson is an RA in the boy's dorm at Fletcher North. "I have always been attracted to technology and it excites me that I will someday have it as my dream job."



**Alison Guerra** is a freshman from Dallas, Texas, attending Drury University. She is majoring in Exercise Physiology and Kinesiology. Alison has been awarded the Dean's Scholarship. "I am a first-year student at Drury. Not only am I a first-year student, but I am also a first-generation student in my family. With my mom being a single mom and an immigrant, I have been extremely blessed to have gotten this far in my academic career. I am so happy I have started this journey at Drury University."



**Myah Clay** attends Missouri Baptist University and is a sophomore pre-nursing major from St. Louis, Missouri. Myah was on the Honor Roll in the fall of 2020. "After graduation, I want to continue my dream as a labor and delivery nurse or a Pediatric or NICU nurse. I have always had a passion to work with kids."



# 50 Years And Counting

*“An educated population makes a better state, nation and world. Missouri Colleges Fund contributes to that end.”*

*• Mr. R. Philip Bixby, President, CEO and Chairman of the Board, Kansas City Life Insurance Company*

**This past year several companies joined a growing list of donors who have supported independent higher education in Missouri for more than 50 years:**

American Pulverizer Company _____	57	J. C. Nichols Company Charitable Trust _____	62
Black and Veatch _____	54	Kansas City Life Insurance Company _____	62
Blue Ridge Bank and Trust Company _____	55	Kansas City Star _____	64
Central Bank _____	63	Loy-Lange Box Company _____	57
Central Bank of Sedalia _____	57	Maritz, Inc. _____	54
Charles H Taylor Memorial Trust _____	65	Massman Foundation _____	63
Commerce Bank _____	66	Medart, Inc. _____	55
Commercial Trust Company _____	54	Macon-Atlanta State Bank _____	50
Country Club Bank _____	53	Norfolk Southern Foundation _____	61
Echo Valley Foundation _____	61	Orscheln Industries Foundation Inc. _____	59
Edison Family Foundation _____	65	P-1 Group, Inc. _____	58
Elliot Management Services _____	51	Park Foundation _____	60
Emerson _____	64	Parmelee Foundation _____	61
F & C Bank _____	53	Peterson Manufacturing Company _____	61
First Federal Bank, F. S. B. _____	60	Reliable Life Insurance _____	50
Fischer-Bauer-Knirps Foundation _____	69	Schnuck Markets, Inc. _____	50
Ford Motor Company Fund _____	55	Sherwood Community Bank _____	51
Gallagher Consultants, LLC _____	51	Skyline Investments Co. LLC _____	55
George K. Baum Foundation _____	54	St. Louis Post Dispatch Charitable Giving _____	56
George Von Hoffman Foundation _____	62	Stupp Bros Bridge & Iron Co Foundation _____	67
GlaxoSmithKline _____	59	Tension Envelope Foundation _____	62
Harry Cooper Supply Company _____	53	The Pott Foundation _____	64
Hawthorn Bank _____	58	Tnemec Company Inc. _____	57
Henry Wurst Inc. _____	56	Paul Uhlmann, Jr. Fund & Elizabeth and Paul Uhlmann III _____	57
Hermann Oak Leather Company _____	54	UMB Financial Corporation _____	55
Highland Quality Chek'd Dairy Products _____	51	Winter Brothers Material Company _____	51
Hillyard, Inc. _____	64		



# Statement of Participating Fund Support

Revenue and Distribution for January 1 to December 31, 2021

Support – Contributions .....	\$328,980
Revenue – Interest and Dividends.....	\$2,974
<b>Total Support and Revenues .....</b>	<b>\$331,954</b>
<b>Distribution to Colleges and Universities .....</b>	<b>\$331,954</b>

*Includes: Avila University, Kansas City; Central Methodist University, Fayette; Columbia College, Columbia; Cottey College, Nevada; Culver-Stockton College, Canton; Drury University, Springfield; Hannibal-LaGrange University, Hannibal; Lindenwood University, St. Charles; Maryville University, St. Louis; Missouri Baptist University, St. Louis; Park University, Parkville; Rockhurst University, Kansas City; Southwest Baptist University, Bolivar; Westminster College, Fulton; William Jewell College, Liberty; William Woods University, Fulton*

<b>Total Gifts Prior to 2021 .....</b>	<b>\$35,906,096</b>
<b>2021 Distribution to Colleges and Universities .....</b>	<b>\$331,954</b>
<b>2021 Gift-in-kind of Goods and Services.....</b>	<b>\$1,000</b>
<b>Total Gifts to Date .....</b>	<b>\$36,239,050</b>
<b>Endowment and Securities Values as of December 31, 2021 .....</b>	<b>\$102,467</b>

## Honor Roll of Contributors

### LEADERSHIP GIFTS DONOR OF THE YEAR \$51,200

United Parcel Service Foundation

### FOUNDER'S CLUB \$25,000 TO \$49,999

Bayer Fund

### CHAIRMAN'S CLUB \$10,000 TO \$24,999

Burlington Northern Santa Fe Foundation

Commerce Bank

Edward Jones Foundation

EMERSON

Enterprise Holdings Foundation

MFA Foundation

Reinsurance Group of America Inc.

The Pott Foundation

### PRESIDENT'S CLUB \$5,000 TO \$9,999

Ford Motor Company

Fresh Ideas Food Service Management, LLC

George H. Riedel Foundation

JE Dunn Construction

Massman Foundation

Nestle Purina PetCare Company \*

The Stifel, Nicolaus & Company, Inc.

Stupp Bros. Bridge & Iron Co. Foundation

United Fire Group

Veteran's United Foundation \*

### PARTNER'S CLUB \$2,500 TO \$4,999

E. Reuben & Gladys Flora Grant Trust

Energy Solutions Professionals, LLC

J.B. Reynolds Foundation

Kansas City Life Insurance Company

Medart, Inc.

Mr. & Mrs. Mike Backer

Parmelee Foundation, Inc.

Peterson Manufacturing Company

Pfizer, Inc.

Tnemec Company

UMB Financial Corporation

Westlake Ace Hardware

**ASSOCIATE'S CLUB**  
**\$1,000 TO \$2,499**

Anderson Creative  
Callaway Electric Cooperative  
Central Bank  
Central Bank of the Ozarks  
Charles H. Taylor Memorial Trust  
Edison Family Foundation  
F & C Bank  
Fischer-Bauer-Knirps Foundation  
Gunther Salt Company  
Hager Companies  
Hawthorn Bank

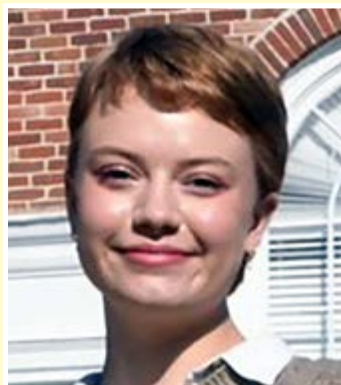
Hillyard, Inc.  
Hogan Motor Leasing Inc.  
HyVee, Inc.  
J. C. Nichols Company  
Charitable Trust  
Jefferson Bank of Missouri  
Kuhn Foundation  
Leggett and Platt, Inc.  
Macon-Atlanta State Bank  
Martin Family Foundation  
Ms. Kris Lensmeyer Leshner

Orscheln Industries  
Foundation, Inc.  
Park Foundation  
Prime, Inc.  
Salvajor Company  
Sherwood Community Bank  
St. Louis Post Dispatch  
Charitable Giving  
The Andrews Family Foundation

\* denotes new donor



**Caiya Marshall** is a freshman attending Columbia College majoring in Arts History with Teacher Certification in Secondary Social Studies. Caiya was a member of the Young Democrats Club while attending high school. "After graduating from Columbia College, I plan to teach history and/or psychology at the high school level. I hope to teach specifically African American History. I want students to have the opportunity to learn about why society is the way it is, and for minority students to be able to learn their history in good ways. I hope to create a spark in students as my teachers did before me."



**Amaryllis Schrock** is a first-year student at Cottey College from El Dorado Springs, Missouri majoring in English. Amaryllis is a member of the French club and plans to travel abroad to Austria and New Zealand while at Cottey. "I dream of one day becoming an author and writing fantasy novels."

**Bilemanga Fataki** is a freshman at Park University and is selecting a science major that will enable her to pursue a physical therapy career. "My entire childhood was spent in a refugee camp before coming to the United States a few years ago. I am the fourth oldest child in my family, and I have eight siblings." Bilemanga is grateful for the opportunities she has received and looks forward to helping others.



# Honor Roll of Contributors – Missouri Investors

Number indicates number of years contributed; + indicates contribution increased or renewed; \* denotes new gift

## Central Missouri Region

- 7 Anderson Creative Marketing & Design
- 15 Butler Chevrolet
- 17 Callaway Electric Cooperative
- 63 Central Bank
- 57 + Central Bank of Sedalia
- 54 Commercial Trust Company
- 22 Cook Vetter Doerhoff & Landwehr
- 48 DeLong's Inc.
- 14 Fresh Ideas Food Service Management
- 58 Hawthorn Bank
- 33 Jefferson Bank of Missouri
- 30 Midland Oil Transports
- 16 MFA Foundation
- 29 + Mid America Bank
- 18 Modern Litho-Print Company
- 17 Mr. & Mrs. Mike Backer
- 7 + Ms. Kris Lensmeyer Leshner
- 59 Orscheln Industries Foundation
- 55 UMB Financial Corporation
- 46 + United Security Bank
- 1 \* Veteran's United Foundation

## Kansas City Region

- 55 Blue Ridge Bank and Trust Company
- 53 Country Club Bank
- 5 + Energy Solutions Professionals
- 33 Enterprise Holdings Foundation
- 53 F & C Bank
- 41 + Fidelity Security Life Insurance
- 55 + Ford Motor Company Fund
- 32 J. B. Reynolds Foundation
- 62 + J.C. Nichols Company Charitable Trust
- 34 J E Dunn Construction
- 62 Kansas City Life Insurance Company
- 34 Kone
- 13 Mark One Electric Company
- 12 • 2021 Annual Report

- 63 Massman Foundation
- 26 Midway Ford Truck Center, Inc.
- 58 P-1 Group, Inc.
- 60 Park Foundation
- 61 Parmelee Foundation, Inc.
- 57 Paul Uhlmann Jr. & Elizabeth & Paul Uhlmann III Fund
- 61 Peterson Manufacturing Company
- 46 Salvajor Company
- 51 Sherwood Community Bank
- 34 The Andrews Family Foundation
- 57 Tnemec Company, Inc.
- 33 W. A. Ellis Construction Company
- 45 + Westlake Ace Hardware

## Northeast Region

- 31 BASF Corporation
- 13 + George H. Riedel Private Foundation
- 50 Macon-Atlanta State Bank
- 41 United State Bank

## Northwest Region

- 65 Charles H. Taylor Memorial Trust
- 64 Hillyard, Inc.
- 47 Mr. Richard N. Deshon

## St. Louis Region

- 57 American Pulverizer Company
- 16 Bayer Fund
- 66 Commerce Bank
- 24 Dierbergs Markets
- 22 E. Reuben & Gladys Flora Grant Trust
- 65 Edison Family Foundation
- 39 Edward Jones
- 64 EMERSON
- 14 ESCO Technologies Inc.
- 69 Fischer-Bauer-Knirps Foundation
- 39 Gunther Salt Company

- 3 Hager Companies
- 54 Hermann Oak Leather Co.
- 22 Hogan Motor Leasing Inc.
- 24 + Koller Craft Plastic Products
- 12 Kuhn Foundation
- 57 Loy-Lange Box Company
- 55 Medart, Inc.
- 5 Mr. James Krekeler
- 1 \* Nestle Purina PetCare Company
- 8 + Pfizer Inc
- 9 Reinsurance Group of America, Inc.
- 44 Schaeffer Manufacturing Company
- 25 Stifel, Nicolaus & Company, Inc.
- 56 St. Louis Post Dispatch Charitable Giving
- 67 Stupp Bros. Bridge & Iron Co. Foundation
- 64 The Pott Foundation
- 45 Tricor-Braun, A Div. of Kranson Industries
- 61 Western Supplies, Echo Valley Foundation
- 52 Winter Brothers Material Company

**Southeast Region**

- 18 First State Community Bank

**Southwest Region**

- 42 Central Bank of the Ozarks
- 36 + Hammons Products Company
- 51 Hiland Quality Chek'd Dairy Products
- 42 Leggett and Platt, Inc.
- 27 Liberty Utilities Empire District
- 45 Martin Family Fund
- 46 Meek Charitable Trust
- 15 + Mr. Robert G. Ingold
- 28 + Prime, Inc.
- 33 O'Reilly Automotive, Inc.
- 55 Skyline Investments Co. LLC
- 26 Superior Gearbox Company

**OUT OF STATE INVESTORS**

**Georgia**

- 47 UPS Foundation

**Iowa**

- 21 HyVee, Inc.
- 26 United Fire Group

**Texas**

- 48 Burlington Northern Santa Fe Foundation

*Number indicates number of years contributed  
 +indicates contribution increased or renewed  
 \* denotes new gift*



Avila University	Central Methodist University	Columbia College
<p>Kansas City, Missouri                      Founded: 1916                      Affiliation: Roman Catholic •                      Enrollment Headcount: 1413 (1177 FTE)                      Student-faculty ratio: 12 to 1                      Average ACT (freshman): 23                      Degrees Offered: BA, BM, BS, BSBA, BSN, BSW, BFA, MBA, MS, MA.</p>	<p>Fayette, Missouri                      Founded: 1854                      Affiliation: United Methodist                      Enrollment Headcount: 4966 (3126 FTE)                      Student-faculty ratio: 13 to 1                      Average ACT (freshman): 22                      Degrees Offered: AA, AS, BS, B.Acc., BASM, BASN, BA, BGS, BME, BS, BSE, BSHS, BSN, Accelerated BSN, M Ed, MM Ed., MS-Clinical Counseling, MSN-Clinical Nurse Leader, MSN-Nurse Educator, MS-Math.</p>	<p>Columbia, Missouri (main campus)                      Founded: 1851                      Affiliation: Christian Church (Disciples of Christ) (nonsectarian)                      Enrollment Headcount: 9913 (5767 FTE)                      Student-faculty ratio: 23:1                      Average ACT (freshman): 21                      Degrees Offered: CERT, AA, AGS, AS, BA, BS, BFA, BGS, MBA, MAT, MSCJ, AND M.ED.</p>
<p>Located in suburban Kansas City, Missouri, Avila University is a Catholic, co-ed, four-year University. In fall 2018, Avila introduced the Avila Promise, which provides students a clearer, more affordable path to college, including 1) a 33% reduction in tuition, 2) a 4-year graduation guarantee, 3) guaranteed internship or research experience, and 4) a travel award of up to \$1,000. Avila is sponsored by the Sisters of St. Joseph of Carondelet and provides students with a balance of liberal arts and pre-professional education. We help students reach their full potential through one-on-one attention, high-quality academics, interdisciplinary classes, and co-curricular activities. Avila serves traditional undergraduates, as well as adult students, through the Avila Advantage program.</p>	<p>Central Methodist University prepares students to make a difference in the world by emphasizing academic and professional excellence, ethical leadership, and social responsibility. Opportunities for service and leadership development abound through student organizations and activities, including fine and performing arts and intercollegiate athletics. Students choose from a comprehensive curriculum of more than 40 majors and pre-professional programs in a highly personalized environment. CMU also offers degree completion programs across Missouri and beyond, typically in partnership with community colleges, other schools, hospitals, businesses, and community organizations. CMU is expanding its online curriculum for both undergraduate and graduate programs as well.</p>	<p>Founded in 1851 in Columbia, Mo., Columbia College has been helping students advance their lives through higher education for more than 170 years. As a private, non-profit institution, the college takes pride in its small classes, experienced faculty, and quality educational programs. Accredited by the Higher Learning Commission, the college has more than 35 locations and offers day, evening, and online classes. Columbia College educates thousands of students each year and has more than 94,000 alumni worldwide. For more information, visit <a href="http://www.ccis.edu">www.ccis.edu</a>.</p>



*Cameryn Jenkins is a sophomore at William Jewell College. She is currently undecided on her major. "After graduating from William Jewell College, I would love to open a non-profit organization for victims of sexual abuse."*



*Grace Cram attends Southwest Baptist University. She is majoring in Exercise Science with a concentration in Rehabilitative Sciences. Grace is in UAC on the marketing committee, campus events committee, and improvement committee in SA. "I am wanting to pursue occupational therapy. I am wanting to do this with children whether it be through a business or school, or both."*



## Cottey College

Nevada, Missouri  
 Founded: 1884  
 Affiliation: PEO Sisterhood  
 (nonsectarian women’s organization)  
 Enrollment Headcount: 283 (280 FTE)  
 Student-faculty ratio: 7 to 1  
 Average ACT (freshman): 22.0  
 Degrees Offered: BA, BS, AA, BS, AFA.

As far back as 1884, Virginia Alice Cottey believed that women deserved educational opportunities equal to those received by men. After saving \$3,000, Cottey and two of her sisters set out to found their own college for women. In 1884 Vernon Seminary, as it was first known, located in Nevada, Missouri, began educating young women.

Cottey’s goal was to give women the best possible academic instruction with a strong foundation in the liberal arts. This solid academic emphasis remains the cornerstone of the college today.

Degrees are offered at the baccalaureate and associate levels. The 7:1 student-to-faculty ratio plays an important part in the students’ academic experience. Women’s college students are independent, open-minded, and willing to embrace new, challenging opportunities. Many students choose women’s colleges because of the leadership opportunities; thus, Cottey offers a leadership certification program and a BA degree in organizational leadership.

All Cottey students participate in a week-long international experience with expenses paid by the college. Cottey is a member of the NAIA and offers eight intercollegiate athletic teams.

Cottey College is accredited by The Higher Learning Commission of the North Central Association of Colleges and Schools. It is an accredited institutional member of the National Association of Schools of Music.

## Culver-Stockton College

Canton, Missouri  
 Founded: 1853  
 Affiliation: Christian Church  
 (Disciples of Christ) Enrollment  
 Headcount: 1010 (984 FTE)  
 Student-faculty ratio: 15 to 1  
 Average ACT (freshman): 21  
 Degrees Offered: BA, BFA, BME, BS, BSN,  
 MBA, MBA/MSN, M.ED, MAT.

Culver-Stockton College, situated on 140 acres overlooking the Mississippi River, blends its long-standing legacy of a traditional liberal arts education with modern experiential courses and a unique academic calendar, offering an array of active-learning opportunities, including internships, research and travel courses.

Every course and major of Culver-Stockton’s curriculum emphasizes experiential learning. C-SC’s 12-week /3-week innovative academic calendar has separated semesters into two terms, allowing students to focus on fewer courses at once. Students also have the flexibility to design individualized majors, incorporating courses from multiple fields of study into one degree.

Culver-Stockton athletics, student organizations and Greek life also offer students numerous leadership opportunities. The curriculum furthers the mission of the College to prepare students of promise for a dynamic world through its distinctive experiential curriculum within a supportive learning community founded upon the best values of faith and the human spirit.

## Drury University

Springfield, Missouri  
 Founded: 1873  
 Affiliation: Independent  
 Enrollment Headcount: 1491 (1357 FTE)  
 Student-faculty ratio: 13:4:1  
 Average ACT (freshman): 26  
 Degrees Offered: AS, BBA, BGS, BS, BA,  
 BAH, BBD, BBH, BME, BMT, BSC, MBA,  
 MEC, BSAS, MARCH.

Established in 1873, Drury University sits on 90 acres in the heart of Springfield, Missouri. Since its founding, Drury has transformed lives by allowing students to pursue both intellectual passions and professional capacities. Through Drury’s new academic program, Your Drury Fusion, students are guaranteed to graduate with valuable and practical life credentials, as well as hands-on learning experiences and opportunities to solve real-world problems.

97% of the 2016-2017 graduates stated that they were employed, in graduate school, or taking a gap year within six months of graduation, and Drury was named a top 25 “Best Bang for the Buck” college in the Midwest by *Washington Monthly*.

Drury has also been recognized as a “Tree Campus USA” by the Arbor Day Foundation since 2015.

One of the “Best 384 Colleges”  
 The Princeton Review, 2019 edition of prestigious annual “Best Colleges” publication

Drury Athletics won 35 National Championships, more than any other four-year institution in Missouri.

96% of Drury students receive a portion of \$32.9 million in financial assistance. Drury’s average student debt is below the state, regional, and national averages.



## Hannibal-LaGrange University

Hannibal, Missouri

Founded: 1858

Affiliation: Southern Baptist

Enrollment Headcount: 900 (700 FTE)

Student-faculty ratio: 13 to 1

Average ACT (freshman): 22.5

Degrees Offered: AA, AS, ASN, LPN, AAS, BA, BM, BS, BAS, BSE, BSN, MSE, MAL.



**Christ-Centered.** HLGU's motto, "Knowledge for Service," means we prepare you for your future with the knowledge that will equip you to develop your passion and impact the world. You will engage ideas, people, and your education from a distinctively Christian perspective across all areas of study. Growth in our faith in Jesus is at the center of everything we do.

**Learner Focused.** We believe these four years are about you and your success, which is why our students thrive. You want an education that goes deeper than simply memorizing facts and information. We focus on helping you develop problem-solving, communication, and leadership skills. We teach you how to think, not what to think.

**Globally Minded.** We believe in giving students individual attention through a small environment with access to the world. We are continuously developing partnerships and opportunities for you to serve through mission opportunities and study abroad. We are intentionally small with big opportunities.

**Service-Oriented.** We believe Jesus gave us the ultimate example of service to others. You want to do more with your life than simply work. We want to foster that life of service. We will help you prepare for career effectiveness and promote a life of service through whatever career you choose.

Visit us at [hlg.edu](http://hlg.edu).





## Lindenwood University of Saint Charles

St. Charles, Missouri  
 Founded: 1827  
 Affiliation: Independent  
 Enrollment Headcount: 7346 (5875 FTE)  
 Student-faculty ratio: 12 to 1  
 Average ACT (freshman): 23  
 Degrees Offered: BA, BFA, BS, BSW, MA, MAT, MBA, MFA, MHA, MS Ed.S, Ed.D.

Lindenwood University is committed to enhancing lives through quality education and professional preparatory experience. The main campus is nearly 200 years old and is located in St. Charles, Missouri, just a few miles west of St. Louis. Lindenwood is rooted in tradition, driven by innovation, and educates for the future. The University boasts a rich history, as well as modern amenities, and is dedicated to providing access to resources that enable academic success.

Lindenwood University offers 104 academic programs with options for every learner through on-ground, hybrid, and online degree options. The University has earned numerous local and national rankings. It has been recognized by the Colleges of Distinction for the University's commitment to equity and inclusion, military support, and career development. Lindenwood has been continuously accredited by the Higher Learning Commission since 1921 and holds additional accreditations for many academic programs.

A member of the NCAA, Division II, Lindenwood athletes compete in the GLVC conference in 26 sports. Additionally, the University offers 19 Intercollegiate Club Sports; together, these programs comprise one of the country's largest athletics departments.

Lindenwood is committed to providing students with Real Experience to prepare them for Real Success.

## Maryville University of Saint Louis

St. Louis, Missouri  
 Founded: 1872  
 Affiliation: Independent, Coeducational  
 Enrollment Headcount: 9239 (4618 FTE)  
 Student-faculty ratio: 14 to 1  
 Average ACT (freshman): 24  
 Degrees Offered: BA, BFA, BS, BSMT, BSN, DNP, D. PT, Ed.D, MA, MBA, MA.Ed, MOT, MS, MSN, MMT, PMSN.

Maryville University is an outstanding national university offering a comprehensive and innovative education focused on student learning, outcomes and success. Founded in 1872, it is one of the oldest private institutions in the region.

Maryville offers more than 90 programs at the undergraduate, masters and doctoral levels to students from 50 states and 55 countries. With an average class size of 14 students, Maryville students receive the unparalleled personal attention and build relationships with our expert faculty – 90 percent of whom hold PhDs or terminal degrees. In addition, Maryville students boast a 97 percent career placement rate within six months of graduation.

As a part of Maryville's commitment to learning, innovation, and technology, every incoming Maryville student receives an iPad. Students integrate the iPad into their classroom experience and use the iPad to collaborate with faculty and fellow students, create content, enhance technological competencies, and become confident problem solvers in today's digital world. Maryville's athletics teams compete at the Division II level in the Great Lakes Valley Conference. There are 150+ Maryville student organizations with more than 3,000 events held on campus each year. Maryville's 130-acre campus is conveniently located within 20 minutes of downtown St. Louis.

## Missouri Baptist University

St. Louis, Missouri  
 Founded: 1964  
 Affiliation: Missouri Baptist Convention  
 Enrollment Headcount: 4855 (2610 FTE)  
 Student-faculty ratio: 19 to 1  
 Average ACT (freshman): 21  
 Degrees Offered: WCE, CA, CBA, CHM, CIT, CM, CMI, CFM, CFL, AAS, ASB, AAGS, ASCM, ASPN, BA, BS, BSE, BPS, BM, BME, BSN, CES, GET, CFM, CSMG, CLMS, CPT, CSMK, CSPE, CTOMA, MA-C, MACM, MAT, MEA, MET, MCSL, MSE, MBA, MSCJ, MSFM, MSSM, MSHL, MSW, EdS, Ed.D

Missouri Baptist University is a Christ-centered, liberal arts institution in Saint Louis, Mo. MBU currently offers more than 70 programs of study leading to professional certificates, undergraduate degrees, and graduate degrees in an environment where academic excellence is emphasized and a Biblically-based Christian perspective is maintained. MBU's purpose is to be able to challenge student's lives spiritually, intellectually, and professionally to serve in a global and culturally diverse society.

There are currently 10 MBU locations, including its 66-acre West St. Louis County campus and regional learning centers throughout the St. Louis region and Illinois. In addition, the University currently offers nearly 30 degrees entirely online.

MBU was recently named the 7th top University for inspiration by peers. The ranking was published in The Wall Street Journal and Times Higher Education's top US college rankings list.

The University was also named a Top Workplace in the large workplace category by the St. Louis Post-Dispatch's annual list for the sixth year in as many years of eligibility.



**PARK**  
UNIVERSITY<sup>SM</sup>



**ROCKHURST**  
**UNIVERSITY**  
*Where leaders learn.*



**Southwest Baptist**  
**UNIVERSITY**

## Park University

Parkville, Missouri

Founded: 1875

Affiliation: Independent

Enrollment Headcount: 16290 (7262 FTE)

•Student-faculty ratio: 15:1

Average ACT (freshman): 21.1

Degrees Offered: AA., AS, BA, BFA, BPA, BM, BS, BSEd., BSN, BSW, MAEd, MBA, M.Ed, MHA., MIS, MM, MPA MSW; 3 Undergraduate Certificates, 16 Graduate Certificates, 1 Graduate Diploma.

Park University, a comprehensive, independent institution that is a national leader in higher education, serves an ethnically diverse student population and non-traditional adult learners at 41 campus centers across the US, including 33 on military installations and online worldwide.

Park increases access to higher education by offering the quality undergraduate and graduate degrees students desire at locations, times, and delivery formats that best serve their needs. The University is ranked among the top colleges in the country for adult learners (Washington Monthly) and is consistently ranked among the top private colleges in the country for return on investment (PayScale College R01).

Providing such access has developed considerable diversity among the student population, with nearly 260 international students from 58 countries and 47 percent student representation from racial, ethnic, and cultural groups typically underrepresented in colleges and universities. In addition, the NAA's extracurricular activities and championship-caliber athletic programs complement Park's outstanding scholastic programs.

Park University maintains a long-standing relationship with the US military, for which it has been recognized as one of the largest providers of online undergraduate education to military learners worldwide. Since 2009, Park has received international recognition each year by Victory Media (publisher of G.I. Jobs, STEM Jobs, and Military Spouse magazines) as one of its top military-friendly colleges and universities. In addition, Park is among the top five "Best for Vets" private colleges/universities in the country (Military Times).

## Rockhurst University

Kansas City, Missouri

Founded: 1910

Affiliation: Catholic, Jesuit

Enrollment Headcount: 3,688 (2,726 FTE)

Student-Faculty Ratio: 14 to 1

Average ACT (freshman): 23

Degrees Offered: AA, AS, BA, BS, BSN, BSBA, MEd, MOT, MBA, MS, MA, DPT.

Rockhurst University is a Catholic, Jesuit institution with more than 100 years of experience educating students in the cultural heart of Kansas City. The University's approach is rooted in the 450-year-old Jesuit tradition of academic excellence, inspiring students to think and communicate effectively, lead others, foster a love of lifelong learning, serve their communities, and find God in all things.

With more than 3,500 undergraduate and graduate students offering more than 70 programs of study, Rockhurst University provides the perfect college setting. US News & World Report ranks Rockhurst among the top regional universities in the Midwest, and SmartAsset has ranked it No. 3 best value among colleges and universities in Missouri.

Rockhurst offers a thriving campus filled with activity and energy outside the classroom. With more than 70 student organizations ranging from Greek life and athletics to community service and campus ministry, students are sure to find many ways to express their individuality.

Rockhurst students are challenged, inspired, and assisted by exceptional faculty. In fact, an impressive 89 percent of full-time faculty holds the highest degree in their field. Students experience rigorous academics within a tight-knit community that wants them to succeed. That's why 96.3 percent of Rockhurst graduates report being employed or accepted into graduate school within six months of graduation.

## Southwest Baptist University

Bolivar, Missouri

Founded: 1878

Affiliation: Southern Baptist (Missouri Baptist Convention)

Enrollment Headcount: 3039 (3189

FTE) Student-faculty ratio: 12 to 1

Average ACT (freshman): 22

Degrees Offered: AA, AAS, ASN, AS, ASR, BA, BAS, BS, BM, BSN, BSW, MA, MBA, MS, MSN., Ed.D., Ed.S., D.P.T.

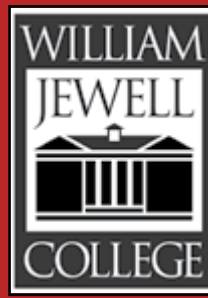
Since 1878, Southwest Baptist University has been a Christ-centered, caring academic community preparing students to be servant leaders in a global society. SBU has five campuses across Missouri; Bolivar, Mountain View, Salem, Springfield, and Online. SBU professors bring learning and faith together to give students a liberal arts education that offers more than just preparation for a career. Students are intellectually engaged through faith-inspired academic and campus life programs. The result? A culturally relevant education that equips Bearcats for a lifetime of success.

Servant leadership is a fundamental component of the SBU experience and is a required part of the SBU Honors Program. To gain global experience, students are encouraged to study internationally or do a short-term mission project in a different culture. SBU's unique Intercultural Studies major requires students to spend a six-month semester living abroad. Alumni are prepared to be servant leaders and can be found serving worldwide, from the boardroom to the classroom and on the mission field.

SBU has been recognized as one of America's 100 Best College Buys since 1995 and one of America's Best Christian Colleges since 1996. SBU has five campuses.



**WESTMINSTER  
COLLEGE**  
THE POWER IN PURPOSE™



**WILLIAM WOODS  
UNIVERSITY**

## Westminster College

Fulton, Missouri  
 Founded: 1851  
 Affiliation: Presbyterian  
 Enrollment Headcount: 656 (700 FTE)  
 Student-faculty ratio: 10 to 1  
 Average ACT (freshman): 22  
 Degrees Offered: BA.

Westminster College is a historic and transformative liberal arts college where faculty, staff, and alumni have united since 1851 to help students find their purpose while empowering them to be successful in all aspects of their lives.

Internationally recognized as the home of America's National Churchill Museum, Westminster continues to attract worldwide attention following Winston Churchill's famous "Iron Curtain" speech on its campus in 1946. Today the College remains a backdrop for legendary lectures by luminaries such as former U.S. Secretary of State Dr. Madeleine Albright, former Soviet President Mikhail Gorbachev, former President George H.W. Bush, and former Prime Minister of Great Britain Margaret Thatcher, to name just a few.

Renowned as one of the nation's top private colleges for providing a measurable return on investment, Westminster boasts a 97 percent placement rate, a national top 15 percent ranking by Payscale.com for graduate earnings and the status as the only college in Missouri ranked by U.S. News & World Report as a National Liberal Arts College.

Students' profound transformational experiences are demonstrated by the College's passionate and prestigious alumni community. So many of our alumni are leaders in their fields — members of Congress, heads of major corporations, Supreme Court justices, best-selling writers, physicians, attorneys, business owners, and philanthropists.

## William Jewell College

Liberty, Missouri  
 Founded: 1849  
 Affiliation: None  
 Enrollment Headcount: 751 (755 FTE)  
 Student-faculty ratio: 10 to 1  
 Average ACT (freshman): 24.9  
 Degrees Offered: BA, BS, B.S.N., M.S.Ed.,  
 Masters of Arts in Teaching (MAT),  
 Graduate Artist's Diploma in Voice.

William Jewell College's commitment to cultivating critical thinkers in pursuit of meaningful lives is woven into the living and learning community and is the basis of the Critical Thought and Inquiry Core Curriculum and academic programs, including nursing, civil engineering, data science, music, and non-profit leadership. The outcomes of this approach are evident through 99.1 percent of Jewell students who are employed or in graduate school within six months of graduation. They are accepted to top graduate programs and have received competitive grants and scholarships, including Fulbright, Goldwater, Rhodes, Truman, National Institutes of Health, National Science Foundation, and Teach for America.

Among Jewell's distinctive programs are the Oxbridge Honors Program, which combines the British tutorial style of learning with a year of study at Oxford, Journey Grants, and the Pryor Leadership Program. A national award-winning Concert Choir and Debate Team, the Harriman-Jewell performing art series, and the Honors Institute in Critical Thinking demonstrate the depth of opportunities available to students.

William Jewell is an Apple Distinguished School and is consistently ranked among America's best colleges by *US News & World Report*, *Money*, *The Princeton Review*, *Forbes*, *Washington Monthly*, *Kiplinger's Personal Finance*, and *Wall Street Journal/Times Higher Education*.

## William Woods University

Fulton, Missouri  
 Founded: 1870  
 Affiliation: Disciples of Christ  
 Enrollment Headcount: 2168 (2119 FTE)  
 Student-faculty ratio: 11 to 1  
 Average ACT (freshman): 22.7  
 Degrees Offered: A.A., B.A., B.S., B.F.A.,  
 B.A.S., B.S.W., M.B.A., M.H.A., M.Ed., Ed.S.,  
 Ed.D.

William Woods University has been consistently ranked over the past decade as one of the top 100 regional universities in the Midwest by US News. Founded in 1870, the University expanded its mission in 1992 to address the coeducational needs of working adults. The campus is headquartered on 200 scenic acres in Fulton, Missouri, with classrooms also in Columbia, Missouri, and cohorts throughout the state; William Woods is a coeducational, independent, professions-oriented, liberal arts-based institution. It is also an official Military Friendly School, working closely with military and veteran students and their families.

Unique undergraduate programs of study include a four-year American Sign Language program, an internationally recognized Equestrian Studies program, and a Criminal Justice program. The University also recently added new degree programs in cybersecurity and the Show-Me GOLD program, which prepares young men and women to become commissioned officers in the Missouri National Guard.

In addition, William Woods offers undergraduate and graduate programs for working adults, including a Master of Business Administration, Master in Healthcare Administration, Master of Education, Education Specialist, and Doctorate of Education in Leadership. Several of these programs are offered where the bachelor's and master's degrees are earned in five years.

# MISSOURI

## COLLEGES FUND INC.

SINCE 1952

