

Message from the Chair

This has been a year of transition for many of us including the Missouri Colleges Fund.

As a society, we are learning what the world looks like after a pandemic that impacted us so much. Higher education is changing and adapting to students' needs and desires. And most of us are working with tighter budgets, fewer team members, and higher expectations.

Our new President, Susan Stegeman, understands the challenges that face higher education. She has brought new ideas and energy to the organization resulting in an increase in donations this past year to support our member institutions.

Missouri Colleges Fund has worked with the Council of Independent Colleges (CIC) on grants to support the Fund including a STEM matching grant of \$16,000 and a \$10,000 capacity grant that allowed us to update marketing materials and our



website. We've implemented a Showme Scholarship Challenge Match to celebrate our 70th year with support from a CIC challenge grant and as of December, 72% has been raised for the match.

Other highlights from this past year include holding our first Advancement Roundtable with our member institutions, adding scholarship recipient thank you videos for our donors, providing a way for donors to give online on our website, reducing operational expenses, and having several members attend the Midwest Roundtable on Talent to discuss ideas to better support our institutions and students.

Thank you to the Board for their support and guidance over the past year as we work to raise more funds for our Missouri private higher education institutions.

We look forward to continuing our mission to acquire resources to help educate students and offer even more scholarships



for our future leaders. Your gift matters and strengthens the ability of our member institutions to educate talented students regardless of their financial circumstances.

We appreciate your support of the Missouri Colleges Fund.

Sincerely,

Kris Lensmeyer

Kris Lensmeyer, Board Chair

16 Member Missouri Colleges Fund Economic Impact 2022:

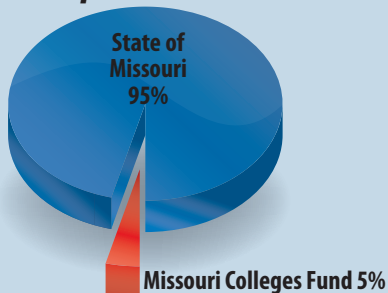
Colleges & Universities
10,066 employees

Generates Economic Activity
\$4.6 Billion

Undergraduate Enrollment
63,444 students

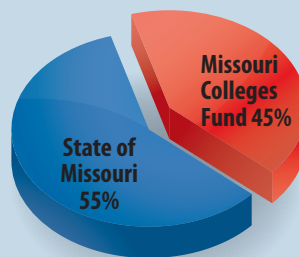
A Greater Proportion of Missouri's Degrees: The 5-45-65 Equation

Share of State Tuition Expenditures



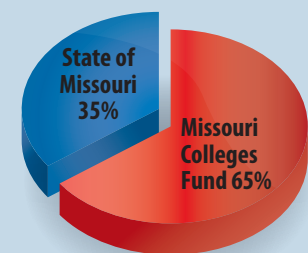
Students with financial need at MCF campuses receive less than 5 percent of the state's tuition expenditures.

Share of Full-Time Undergraduate Enrollment



Overall, MCF campuses enroll 45 percent of all undergraduates in Missouri.

Share of Bachelor's Degrees Awarded



MCF campuses produces 65 percent of all bachelor's degrees awarded in the state.

Private Colleges Work Hard To Help Students Succeed.

FIRST GENERATIONS STUDENTS ARE MORE LIKELY TO GRADUATE FROM PRIVATE COLLEGES

70% graduated from private colleges within 6 years

57% graduated from public universities within 6 years

EMPLOYERS WANT LIBERAL ARTS KNOWLEDGE

80% of employers think every student should acquire broad knowledge in the liberal arts

PRIVATE COLLEGE GRADUATES FINISH ON TIME

59% of graduates of smaller private colleges finish within 4 years

38% of graduates of regional public universities finish within 4 years

PRIVATE COLLEGES AWARD 3X LARGER GRANTS

\$14,826

awarded on average per student at private colleges

\$4,765

awarded on average per student at public universities

LIBERAL ARTS STUDENTS ARE ENGAGED CITIZENS

77% of 18-24 year-old private college students are registered to vote

53% of 18-24 year-olds who do not attend private colleges are registered to vote

PRIVATE COLLEGES AWARD 2X MORE GRANTS

80% of students at private colleges receive grants

40% of students at public universities receive grants



Jordyn Williamson is a freshman enrolled in the Music Education program at Central Methodist University. Jordyn is pledging SAI this semester and is in several musical ensembles. "After college, I plan to teach high school band and go back to school to further my education in the music department."



Cassandra Williams is a Culver-Stockton College junior majoring in Musical Theater BFA. She is from Sikeston, MO. Cassandra is a member of the Beta Mu chapter of Sigma Kappa. "My plans after graduation are to get my MFA in directing and playwriting. After that, I hope to either continue my performing career or start teaching theatre at the collegiate level."



Caroline Little is a third-year student at Cottey College from Topeka, Kansas, majoring in International Relations. Caroline plans to have a career working in the political industry, "One day, I want to work in political communications, specifically speech writing, and my time at Cottey has prepared me well for this endeavor."

Profile of the Missouri Colleges Fund, Inc.

Mission

The Mission of the Missouri Colleges Fund is to acquire resources to help educate students in member independent/private, four year, liberal-arts colleges and universities.

History and Purpose

The Missouri Colleges Fund (MCF) was incorporated in 1952 as a partnership of private enterprise, entrepreneurs, and the member independent colleges and universities in the Show-Me State. For 70 years, MCF has been a leader in building communications among its member institutions and partners with businesses, foundations and individuals that mobilize collaboration and financial support. It enables these institutions to accomplish more through this joint effort than they might acting individually.

Gifts Go Directly to Support Students

All unrestricted support the member institutions receive from the MCF is used for need-based financial aid for qualified students unless otherwise directed by the donor. Recipients of these scholarships are selected by the member colleges, not by the Fund.

Membership

The member schools are independent baccalaureate degree-granting liberal arts and comprehensive colleges and universities in the State of Missouri, accredited by the Higher Learning Commission of the North Central Association of Colleges and Schools.

Distribution of Funds

Undesignated funds are distributed equally to member institutions. The MCF accepts contributions designated for one or more institutions and distributes gifts in accordance with the donor's wishes. 100% of donations are distributed to member institutions to award for scholarships.

Legal and Tax Status

The MCF was formed in 1952 as a non-profit corporation. The fund is classified as a public charity under section 509(a) (2) of the Internal Revenue Code and is a 501(c) (3) tax-exempt organization. All contributions to the fund are tax-deductible up to the limits prescribed by the law. Our Federal ID Number is 43-0680952.

Solicitors

Business members of the Board, college presidents and chief development officers make solicitation calls on

behalf of the MCF without compensation from the Fund. Susan Stegeman, MCF President, joined the Fund in February 2022.

Diversity Statement

The MCF is committed to a policy of non-discrimination and equal opportunity in hiring and administering all its programs. The fund does not discriminate based on race, religion, color, national origin, gender, sexual orientation, age, disability or on any other basis that would be in violate any applicable federal or state law.

Operating Budget

The Board of Directors approves a budget underwritten by equal assessments paid by each member institution. Gifts to the fund are not used for the administration of the Fund.

Annual Audit

Our fiscal year is January 1 through December 31. The financial records are audited annually and the 2022 Audit was conducted by Graves and Associates, CPA's, of Jefferson City.

National Affiliation

The MCF is affiliated with the *Council of Independent Colleges* which is a national partner in a network of member state and regional associations that represent more than 650 private colleges and universities.



Learning is fun. Hannibal-LaGrange University.

GIVING OPPORTUNITIES

Unrestricted Gifts

Unrestricted gifts have played an essential role in our colleges and universities since the founding of the Missouri Colleges Fund in 1952. These important gifts have a profound impact on the ability of our institutions to meet their changing needs.

All undesignated funds are used by member colleges and universities to provide need-based financial aid for students.

Teachers First Scholars Program

For the past twenty years, many school districts in Missouri have been faced with a critical teacher shortage due primarily to record retirements of experienced teachers. The independent member colleges of the Missouri Colleges Fund are excelling in their efforts to respond by graduating properly certified teachers ready to take their place in the elementary and secondary schools in Missouri.

Since 1998, the TEACHERS FIRST Scholars Program has raised more than \$6 million for need-based financial aid to outstanding students who are returning to the classroom to teach in areas of child and family education, special education, elementary, middle school, and secondary education.

WORKFORCE DEVELOPMENT IMPACT

Member independent institutions are educating Missouri's future workforce. When you contribute toward the Fund, you are playing a part in this future. Invest with us to make a difference.

Our member institutions also contribute to Missouri's workforce by employing over 10,000 people. Independent higher education helps serve Missouri's people and economy.

As a society, we are made better by an educated population. Our culture is more vibrant. Our economy is richer. Higher education is the path to success for our young people and investing in higher education has and will continue to serve our state well as we endeavor to create more well-paying jobs in Missouri.

STEM Scholars Program

Studies reveal that most eighth and tenth-grade students in Missouri score lower than proficient in math and science. MCF has been working to grow our STEM education programs by raising funds to support students in STEM fields. In 2022, our funding grew by 80% thanks to donors' support that was matched by the Council for Independent Colleges (CIC).

The STEM Scholars Program raises financial aid to underwrite science, technology, engineering, and math scholarships at our member institutions.

First Opportunity Scholars Program

The United States is experiencing a major demographic shift affecting college enrollments and corporate employment. By 2050, the population will reach more than 450 million people, with new immigrants and their children accounting for approximately 80 percent of that growth.

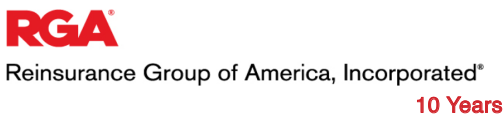
As the nation's demographics change, there will be a significant and increasing number of low-income, first-generation, minority, and new American students enrolling in college and preparing for the workforce. The First Opportunity Scholars Program aims to foster increased college access and financial aid for these students.



Thank You to our 2022 Corporate Partners

"We are proud to present our 2022 Annual Report to showcase our mission and what we accomplished together for independent higher education. Highlights include: meeting our STEM Challenge Grant, receiving a CIC Capacity Grant, updating our website, and realizing a 10% increase in scholarship funding for our member institutions and the students they serve. Thank you for being part of the MCF and for making a difference."

Susan Stegeman, MCF President





48 Years



17 Years



Veterans United.
Foundation

2 Years



34 Years



2022 Board of Directors Executive Committee:

Ms. Kris Lensmeyer,
Director, Fresh Ideas Food Management, Chair

Dr. Elizabeth MacLeod Walls,
President, William Jewell College, Vice Chair

Dr. Keith Ross,
President, Missouri Baptist University, Secretary-Treasurer

Dr. Ken Theroff,
President, Central Bank, Past Chair

Mr. David Disney,
Retired J.E. Dunn Construction

Dr. Roger Drake,
President, Central Methodist University

Ms. Louise Hune,
Retired Jefferson City Medical Group

Dr. Douglas Palmer,
President, Culver-Stockton College

Ms. Susan Stegeman,
President, Missouri Colleges Fund

Members:

Mr. Stephen S. Adams, III, Iron Steed Harley Davidson

Dr. James Burkee, President, Avila University

Dr. Sandra Cassady, President, Rockhurst University

Dr. J. Timothy Cloyd, President, Drury University

Mr. Joseph Davies, Vice President, Central Bank of Boone County

Mr. Don Fox, Senior Vice President, Wells Fargo Advisors

Mr. Donald Lofe, Jr., President, Westminster College

Dr. Mark Lombardi, President, Maryville University

Dr. Robert Matz, President, Hannibal-LaGrange University

Dr. Richard Melson, President, Southwest Baptist University

Dr. Jeremy Moreland, President, William Woods University

Dr. Stephanie Niles, President, Cottey College

Mr. Stephen Parshall, Senior Vice President, UMB Bank

Mr. John Porter, President, Lindenwood University

Mr. Stan Roux, Retired UPS

Dr. David Russell, President, Columbia College

Mr. Justin Setser, Vice President, Central Trust Company

Mr. Shane Smeed, President, Park University

Mr. Steve Sowers, President, Commerce Bank

Mr. David Turner, President, Hawthorn Bank

Mr. Scott Van Genderen, Advisor, Edward Jones

Ms. Marcia Youker, Director of Business Development,
J. E. Dunn Construction



Katarina Vasiljkovic is from Belgrade, Serbia and attends Missouri Baptist University. She is a junior working toward her degree in Psychology. She also is a member of the Spartans tennis team. "After graduation next year, I want to enroll in a master's program in sports psychology in order to unite my three loves, which are psychology, sports and nutrition."



Alison Guerra is a sophomore from Dallas, Texas, attending Drury University. She is majoring in Exercise Physiology and Kinesiology. "I am a first-generation student in my family. With my mom being a single mom and an immigrant, I have been extremely blessed to have gotten this far in my academic career. I am so happy I am on this journey at Drury University."



Muneebah Qayyum is a junior Computer Science major with an emphasis on Software Development and UX Design at Maryville University. She received the Dean's and Barrett Scholarships from Maryville during her first year. "My goal after graduation is to be a UX designer for Google. I'm excited to continue my journey, I've worked hard to get where I am, and I will continue to work hard to accomplish my goals."



Ghada Mousa is a psychology major attending Park University. Ghada plans to pursue a career in Psychotherapy. Being from the Middle East, she sees the difference access to mental health services can make in a person's life. She dreams of spreading this awareness and giving mental health services to those who need it most." She is grateful for the support of the scholarship to make her dreams come true and achieve her goals in this field.



Abigail Kenney attends William Woods University. She is a senior Equestrian Administration major from Belle, Missouri. Abigail is a member of the Paddock Club and the Archery Team. She is also the 2022 President of Delta Gamma. "I plan on moving to Kentucky to work at Rood and Riddle, an equine veterinary hospital after I graduate with my soon-to-be husband. Horses have always been a passion of mine, and I can't wait to work at such a high-caliber facility that helps so many of them."

50 Years And Counting

"An educated population makes a better state, nation and world. Missouri Colleges Fund contributes to that end."

• Mr. R. Philip Bixby, President, CEO and Chairman of the Board, Kansas City Life Insurance Company

This past year several companies joined a growing list of donors who have supported independent higher education in Missouri for more than 50 years:

American Pulverizer Company _____	58	J. C. Nichols Company Charitable Trust _____	63
Black and Veatch _____	54	Kansas City Life Insurance Company _____	63
Blue Ridge Bank and Trust Company _____	57	Kansas City Star _____	64
Central Bank _____	64	Loy-Lange Box Company _____	58
Central Bank of Sedalia _____	58	Maritz, Inc. _____	54
Charles H Taylor Memorial Trust _____	66	Massman Foundation _____	64
Commerce Bank _____	67	Medart, Inc. _____	56
Commercial Trust Company _____	55	Macon-Atlanta State Bank _____	51
Country Club Bank _____	54	Norfolk Southern Foundation _____	61
Echo Valley Foundation _____	62	Orscheln Industries Foundation Inc. _____	60
Edison Family Foundation _____	66	P-1 Group, Inc. _____	59
Elliot Management Services _____	51	Park Foundation _____	61
Emerson _____	65	Parmelee Foundation _____	61
F & C Bank _____	54	Peterson Manufacturing Company _____	62
First Federal Bank, F. S. B. _____	60	Reliable Life Insurance _____	50
Fischer-Bauer-Knirps Foundation _____	70	Schnuck Markets, Inc. _____	50
Ford Motor Company Fund _____	56	Sherwood Community Bank _____	52
Gallagher Consultants, LLC _____	51	Skyline Investments Co. LLC _____	56
George K. Baum Foundation _____	54	St. Louis Post Dispatch Charitable Giving _____	56
George Von Hoffman Foundation _____	62	Stupp Bros Bridge & Iron Co Foundation _____	68
GlaxoSmithKline _____	59	Tension Foundation _____	63
Harry Cooper Supply Company _____	53	The Pott Foundation _____	65
Hawthorn Bank _____	59	Tnemec Company Inc. _____	58
Henry Wurst Inc. _____	56	Paul Uhlmann, Jr. Fund & Elizabeth and Paul Uhlmann III _____	58
Hermann Oak Leather Company _____	55	UMB Financial Corporation _____	56
Highland Quality Chek'd Dairy Products _____	52	Winter Brothers Material Company _____	53
Hillyard, Inc. _____	65		

The ShowMe Scholarship Challenge Match

Thanks to the Council for Independent Colleges (CIC), MCF has been awarded a challenge grant. To meet the growing gap between college costs and financial aid, and to commemorate 70 years of our partnership with independent higher education, MCF is on a mission to grow our scholarship fund. The goal is to raise

\$50,000 in new, increased, or re-instated gifts by July 31, 2023 and MCF will receive \$25,000 from the CIC. Please consider investing with us in our students' futures.

Please go to www.mocollegesfund.org for more information or contact: Susan Stegeman at 573-893-3818.



Statement of Participating Fund Support

Revenue and Distribution for January 1 to December 31, 2022

Support – Contributions	\$364,231
Revenue – Interest and Dividends	\$2,207
Total Support and Revenues	\$366,438
Distribution to Colleges and Universities	\$366,438
<i>Includes:</i>	
<i>Avila University, Kansas City; Central Methodist University, Fayette; Columbia College, Columbia; Cottey College, Nevada; Culver-Stockton College, Canton; Drury University, Springfield; Hannibal-LaGrange University, Hannibal; Lindenwood University, St. Charles; Maryville University, St. Louis; Missouri Baptist University, St. Louis; Park University, Parkville; Rockhurst University, Kansas City; Southwest Baptist University, Bolivar; Westminster College, Fulton; William Jewell College, Liberty; William Woods University, Fulton.</i>	
Total Gifts Prior to 2022	\$36,239,050
2022 Distribution to Colleges and Universities	\$366,438
2022 Gift-in-kind of Goods and Services	\$1,708
Total Gifts to Date	\$36,239,050
Endowment and Securities Values as of December 31, 2022	\$105,638

Honor Roll of Contributors

LEADERSHIP GIFTS DONOR OF THE YEAR \$51,200

United Parcel Service Foundation

FOUNDER'S CLUB \$25,000 TO \$49,999

Bayer Fund

CHAIRMAN'S CLUB \$10,000 TO \$24,999

Burlington Northern
Santa Fe Foundation

Commerce Bancshares Foundation

Edward Jones Foundation

EMERSON

Enterprise Holdings
Foundation

JE Dunn Construction
MFA Foundation

Reinsurance Group
of America Inc.

The Pott Foundation

PRESIDENT'S CLUB \$5,000 TO \$9,999

Ford Motor Company

Fresh Ideas Food Service
Management, LLC

George H. Riedel Foundation

LUZCO TECHNOLOGIES, LLC*

Massman Foundation

Nestle Purina
PetCare Company

Pfizer Inc.

The Stifel, Nicolaus
& Company, Inc.

Stupp Bros. Bridge & Iron Co.
Foundation

United Fire Group

Veteran's United Foundation

PARTNER'S CLUB \$2,500 TO \$4,999

E. Reuben & Gladys
Flora Grant Trust

Energy Solutions

Professionals, LLC

Hebenstreit Family Foundation

J.B. Reynolds Foundation

Kansas City Life
Insurance Company

Medart, Inc.

Orscheln Industries Foundation, Inc

Peterson Manufacturing Company

Tnemec Company

UMB Financial Corporation

Westlake Ace Hardware

**ASSOCIATE'S CLUB
\$1,000 TO \$2,499**

Anderson Creative
Callaway Electric
Central Bank
Central Bank of the Ozarks
Charles H. Taylor Memorial Trust
Commercial Trust Company
Edison Family Foundation
F & C Bank
Fischer-Bauer-Knirps Foundation
Gunther Salt Company

Hawthorn Bank
Hillyard, Inc.
Hogan Motor Leasing Inc.
HyVee, Inc.
Jefferson Bank of Missouri
Kuhn Foundation
Macon-Atlanta State Bank
Martin Family Foundation
Midland Transport
Midwest Computech*
Mr. David Disney*

Ms. Kris Lensmeyer Leshner
Steve and Susan Stegeman*
Park Foundation
Prime, Inc.
Salvajor Company
Sherwood Community Bank
Tension Foundation

*** denotes new donor**



Sierra Elking is a freshman from St. Louis, MO attending Columbia College where she is majoring in Biology. She is involved in activities such as health and science club and forensic science club, TRiO, that help her learn about careers in the field of STEM. "This is something that I absolutely needed financially and mentally to push myself forward and remind myself that I am doing what I need to and strive to make the best version of myself here. Thank you so much; you have absolutely done the job of successfully making a student's life better. I can say that personally with confidence. Thank you again."



Women's Lacrosse is back at Lindenwood!

Honor Roll of Contributors – Missouri Investors

Number indicates number of years contributed; + indicates contribution increased or renewed; * denotes new gift

Central Missouri Region

- 8+ Anderson Creative Marketing & Design
- 16 Butler Chevrolet
- 18+ Callaway Electric Cooperative
- 64 Central Bank
- 58 Central Bank of Sedalia
- 67+ Commercial Bancshares Foundation
- 55+ Commercial Trust Company
- 49 DeLong's Inc.
- 15 Fresh Ideas Food Service Management
- 59 Hawthorn Bank
- 35 Jefferson Bank of Missouri
- 32+ Midland Transports
- 17+ MFA Foundation
- 30 Mid-America Bank
- 1* Midwest Computech
- 19 Modern Litho-Print Company
- 1* John and Tina Taylor
- 1* Steve and Susan Stegeman
- 8+ Ms. Kris Lensmeyer Leshner
- 60+ Orscheln Industries Foundation
- 1* Rusty Drowing Toyota
- 56 UMB Financial Corporation
- 47 United Security Bank
- 2+ Veteran's United Foundation

Kansas City Region

- 57 Blue Ridge Bank and Trust Company
- 54 Country Club Bank
- 6 Energy Solutions Professionals
- 34+ Enterprise Holdings Foundation
- 54 F & C Bank
- 42 Fidelity Security Life Insurance
- 56 Ford Motor Company Fund
- 39 Heben Streit Family Foundation
- 35+ J E Dunn Construction

- 33+ J. B. Reynolds Foundation
- 63 Kansas City Life Insurance Company
- 35 Kone
- 14 Mark One Electric Company
- 64 Massman Foundation
- 27+ Midway Ford Truck Center, Inc.
- 1* Mr. David Disney
- 59 P-1 Group, Inc.
- 61 Park Foundation
- 58+ Paul Uhlmann Jr. & Elizabeth & Paul Uhlmann III Fund
- 62 Peterson Manufacturing Company
- 47 Salvajor Company
- 52+ Sherwood Community Bank
- 63 Tension Foundation
- 58 Tnemec Company, Inc.
- 34 W. A. Ellis Construction Company
- 46+ Westlake Ace Hardware

Northeast Region

- 32+ BASF Corporation
- 15 George H. Riedel Private Foundation
- 51 Macon-Atlanta State Bank
- 42 United State Bank

Northwest Region

- 66 Charles H. Taylor Memorial Trust
- 65 Hillyard, Inc.
- 47 Mr. Richard N. & Mignon G. Deshon

St. Louis Region

- 58+ American Pulverizer Company
- 17 Bayer Fund
- 25 Dierbergs Markets
- 16 Drury Inns, Inc.
- 23 E. Reuben & Gladys Flora Grant Trust
- 66 Edison Family Foundation

- 40 Edward Jones Charitable Foundation
- 65 EMERSON
- 15 ESCO Technologies Inc.
- 70 Fischer-Bauer-Knirps Foundation
- 40 Gunther Salt Company
- 55 + Hermann Oak Leather Co.
- 23 + Hogan Motor Leasing Inc.
- 13 Kuhn Foundation
- 58 Loy-Lange Box Company
- 1 * LUZCO Technologies, LLC
- 56 + Medart, Inc.
- 1 * Don and Bridget Fox
- 6 Mr. James Krekeler
- 3 Nestle Purina PetCare Company
- 9 + Pfizer Inc
- 10 Reinsurance Group of America, Inc.
- 45 Schaeffer Manufacturing Company
- 26 Stifel, Nicolaus & Company, Inc.
- 68 Stupp Bros. Bridge & Iron Co. Foundation
- 65 The Pott Foundation
- 46 Tricor-Braun, A Div. of Kranson Industries
- 62 Western Supplies, Echo Valley Foundation
- 53 Winter Brothers Material Company

Southeast Region

- 18 First State Community Bank

Southwest Region

- 43 Central Bank of the Ozarks
- 37 Hammons Products Company
- 52 Hiland Quality Chek'd Dairy Products
- 46 Martin Family Fund
- 27 Meek Charitable Trust
- 16 Mr. Robert G. Ingold
- 34 O'Reilly Automotive, Inc.
- 29 Prime, Inc.
- 56 + Skyline Investments Co. LLC
- 27 Superior Gearbox Company

OUT-OF-STATE INVESTORS

Georgia

- 48 UPS Foundation

Iowa

- 22 HyVee, Inc.
- 27 United Fire Group

Texas

- 49 Burlington Northern Santa Fe Foundation

Washington DC

- 5 Council of Independent Colleges (CIC)

*Number indicates number of years contributed
+indicates contribution increased or renewed
* denotes new gift*



Phillippe Joseph (PJ) Lee Bledsoe is a sophomore Physical Education major at Westminster College. On campus, he is a Westminster football team and track team member, The Churchill Singers Choir, The Alpha Lambda Delta Honor Society, Student Foundations, and a Student Ambassador. "Leading by example" has been my motto throughout my life. I plan to graduate from Westminster College and become a Physical Education teacher and a football Coach. I want to work with students and give them hope to realize that they are essential and can reach their goals if they put in the work and stay focused. I want to put a smile on my student's faces and see them perform to the best of their ability, have fun, and enjoy being active in PE."

Avila University

Kansas City, Missouri
 Founded: 1916
 Affiliation: Roman Catholic •
 Enrollment Headcount: 1568 (1177 FTE)
 Student-faculty ratio: 12 to 1
 Average ACT (freshman): 22

Avila University is an independent Catholic institution of higher education located in suburban Kansas City, Missouri. Founded and inspired by the Sisters of St. Joseph of Carondelet, Avila is a vibrant, diverse university providing liberal arts, professional, undergraduate, and graduate education. Its academic programs prepare students for full participation in society and successful professional careers through more than 40 undergraduate majors, minors, and concentrations and nine master's level graduate programs. Led by first-year President, Dr. Jim Burkee, Avila will reimagine education to meet the needs of today's student and continue prioritizing serving first-generation and other under-served populations. As a values-based community of learning, social justice, and the charism of the CSJ are at the foundation of the institution.

Central Methodist University

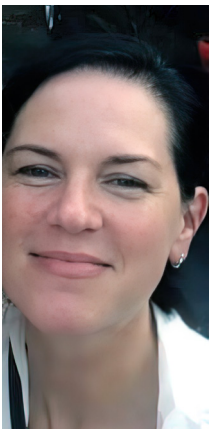
Fayette, Missouri
 Founded: 1854
 Affiliation: United Methodist
 Enrollment Headcount: 4966 (3126 FTE)
 Student-faculty ratio: 13 to 1
 Average ACT (freshman): 22

Central Methodist University fosters a diverse and caring community, empowering students to become lifelong learners, committed to academic excellence, prepared to engage in a complex world. Opportunities for service and leadership development abound through student organizations and activities, including fine and performing arts and intercollegiate athletics. Students choose from a comprehensive curriculum of more than 40 majors and pre-professional programs in a highly personalized environment. CMU also offers degree completion programs across Missouri and beyond, typically in partnership with community colleges, other schools, hospitals, businesses, and community organizations. CMU is expanding its online curriculum for both undergraduate and graduate programs as well. For more information, visit www.centralmethodist.edu

Columbia College

Columbia, Missouri (main campus)
 Founded: 1851
 Affiliation: Christian Church
 (Disciples of Christ) (nonsectarian)
 Enrollment Headcount: 9491 (4756 FTE)
 Student-faculty ratio: 21:1
 Average ACT (freshman): 21

Columbia College is dedicated to improving lives by providing quality education to both traditional and nontraditional students, helping them achieve their true potential. As a private, nonprofit institution, the college takes pride in its small classes, experienced faculty, and quality educational programs. Students can enroll in Day or Evening classes at any of its more than 40 locations around the country, 23 of which are on military installations or take advantage of our pioneering Online Program. The college was founded in 1851 in Columbia, Missouri, is accredited by the Higher Learning Commission and has more than 97,000 alumni worldwide.



Angela Zyniewicz is a senior enrolled in the nursing program at Avila University. She is from Platte City, MO. "I am so appreciative and trying not to cry as I write this. This additional funding is a true gift and relieves an enormous amount of stress. I can now focus on my classes and worry less about managing finances. Thank you so much."



Kairra Mai attends Southwest Baptist University, where she is a senior. She is majoring in Economics and Finance. "I will graduate in May of 2023, get married two weeks later, and move back to my hometown. I will begin my career as a financial analyst at the company I did my finance internship at, Lockwood Packing Company in Lockwood, MO."



Cottey College

Culver-Stockton College

Drury University

Nevada, Missouri
 Founded: 1884
 Affiliation: PEO Sisterhood
 (nonsectarian women’s organization)
 Enrollment Headcount: 313 (310 FTE)
 Student-faculty ratio: 7 to 1
 Average ACT (freshman): 23.0.

Canton, Missouri
 Founded: 1853
 Affiliation: Christian Church
 (Disciples of Christ) Enrollment
 Headcount: 1010 (984 FTE)
 Student-faculty ratio: 15 to 1
 Average ACT (freshman): 21

Springfield, Missouri
 Founded: 1873
 Affiliation: Independent
 Enrollment Headcount: 1589 (1544 FTE)
 Student-faculty ratio: 13:1
 Average ACT (freshman): 25

As far back as 1884, Virginia Alice Cottey believed that women deserved educational opportunities equal to those received by men. After saving \$3,000, Cottey and two of her sisters set out to found their own college for women. In 1884 Vernon Seminary, as it was first known, located in Nevada, Missouri, began educating young women.

It was Cottey’s goal to give women the best possible academic instruction with a strong foundation in the liberal arts. This solid academic emphasis remains the cornerstone of the college today.

Degrees are offered at the baccalaureate and associate levels. The 7:1 student-to-faculty ratio plays an important part in the students’ academic experience.

Women’s college students are independent, open-minded, and willing to embrace new, challenging opportunities. Many students choose women’s colleges because of the leadership opportunities; thus, Cottey offers a leadership certification program and a BA degree in organizational leadership.

All Cottey students participate in a week-long international experience with expenses paid by the college. Cottey is a member of the NAIA and offers eight intercollegiate athletic teams.

Cottey College is accredited by The Higher Learning Commission of the North Central Association of Colleges and Schools. It is an accredited institutional member of the National Association of Schools of Music.

Culver-Stockton College, seated on 140 acres overlooking the Mississippi River, blends its long-standing legacy of a traditional liberal arts education with modern experiential courses and a unique academic calendar, offering an array of active-learning opportunities, including internships, research and travel courses.

Every course and major of Culver-Stockton’s curriculum emphasizes experiential learning. C-SC’s 12-week + 3-week innovative academic calendar has separated semesters into two terms, allowing students to focus on fewer courses at once. Students also have the flexibility to design individualized majors, incorporating courses from multiple fields of study into one degree.

Beyond the classroom, Culver-Stockton’s 21 NAIA athletics, 50+ student organizations, and ten fraternities and sororities offer students numerous leadership opportunities. C-SC’s co-curricular activities, innovative learning style, and commitment to experiential learning have earned Culver-Stockton College the #1 ranking for getting a job in Missouri for three consecutive years by Zippia, Inc. The curriculum furthers the mission of the College to prepare students of promise for a dynamic world through its distinctive experiential curriculum within a supportive learning community founded upon the best values of faith and the human spirit.

Established in 1873, Drury University sits on 90 acres in the heart of Springfield, Missouri. Since its founding, Drury has transformed lives by allowing students to pursue both intellectual passions and professional capacities.

Through Drury’s new undergraduate academic program, Your Drury Fusion, students are guaranteed to graduate with valuable and practical life credentials, as well as hands-on learning experiences and opportunities to solve real-world problems.

The university offers a robust graduate school program, including six master’s degree programs and a host of certificates, such as diversity, equity and inclusion. The College of Graduate Studies intends to launch the inaugural Master of Physician Assistant Studies cohort in fall 2023.

In addition, Drury GO, the university’s evening and online program, offers comprehensive degree paths for any stage of life, ranging from education, to business, health and public safety.

Drury was once again listed in U.S. News & World Report’s Best Colleges rankings in 2022, leaping 14 spots to No. 12 Best Regional University in the Midwest. This marks more than 25 years that Drury has been in the Top 30. The university was also included as one of the “Best 388 Colleges” in The Princeton Review’s 2023 edition of its annual “Best Colleges” publication.



Maryville University Scholarship recipients with MCF President, Susan Stegeman.



A happy Rockhurst University graduate!



William Jewell Nursing program in action.



Hannibal-LaGrange University

Hannibal, Missouri

Founded: 1858

Affiliation: Southern Baptist

Enrollment Headcount: 900 (700 FTE)

Student-faculty ratio: 13 to 1

Average ACT (freshman): 22.5

Hannibal-LaGrange University – An Unapologetically Christian University that transforms lives and communities through relevant education anchored in a Biblical worldview. With the motto “Knowledge for Service,” HLGU prides itself in its traditional and nontraditional educational experience in a distinctively Christian environment.

HLGU is a historic university, fully accredited by the Higher Learning Commission. With 36 majors offered, there are many different paths to choose from to prepare for your future. HLGU is located in America’s Hometown, Hannibal, MO.

Hannibal-LaGrange University is a member of the National Association of Intercollegiate Athletics and offers many opportunities to compete for both men and women. Through the student life activities, there are over 35+ clubs and organizations for you to get involved.

Your college memories are waiting to happen here at HLGU!

Schedule your visit today. Tour the campus, meet the professors, and spend some time with HLGU students. Come get to know HLGU through an on-campus Trojan day. Visit our website at www.hlg.edu/visit to register or call 573.629.3264 for a personal tour.

Lindenwood University

St. Charles, Missouri
 Founded: 1827
 Affiliation: Independent
 Enrollment Headcount: 7000 (4849 FTE)
 Student-faculty ratio: 19 to 1
 Average ACT (freshman): 22

Lindenwood University is committed to enhancing lives through quality education and professional preparatory experience. The main campus is nearly 200 years old and is located in St. Charles, Missouri, just a few miles west of St. Louis. Lindenwood is rooted in tradition, driven by innovation, and built for the future. The University boasts a rich history, as well as modern amenities, and is dedicated to providing access to resources that enable academic success.

Lindenwood University offers more than 100 academic programs with options for every learner through on-ground, hybrid, and online degree options. The University has earned numerous local and national rankings. It has been recognized by the Colleges of Distinction for the University's commitment to equity and inclusion, military support, career development and affordability. Lindenwood has been continuously accredited by the Higher Learning Commission since 1921 and holds additional accreditations for many academic programs.

A member of the NCAA, Division I, Lindenwood athletes compete in the OVC conference in 30 sports. Additionally, the University offers 14 Intercollegiate Club Sports; together, these programs comprise one of the country's largest athletics departments.

Lindenwood is committed to providing students with Real Experience to prepare them for Real Success.

Maryville University of Saint Louis

St. Louis, Missouri
 Founded: 1872
 Affiliation: Independent, Coeducational
 Enrollment Headcount: 9959 (6303 FTE)
 Student-faculty ratio: 13 to 1
 Average ACT (freshman): 22

Maryville University is an outstanding national university offering a comprehensive and innovative education focused on student learning, outcomes and success. Founded in 1872, it is one of the oldest private institutions in the region.

Maryville offers more than 90 programs at the undergraduate, masters and doctoral levels to students from 50 states and 52 countries.

With an average class size of 13 students, Maryville students receive the unparalleled personal attention and build relationships with our expert faculty. In addition, Maryville students boast a 98% career outcome rate within six months of graduation.

As a part of Maryville's commitment to learning, innovation, and technology every incoming on-campus undergraduate student, as well as select on-campus graduate students receives an iPad. Students integrate the iPad into their classroom experience and use the iPad to collaborate with faculty and fellow students, create content, enhance technological competencies, and become confident problem solvers in today's digital world.

Maryville's athletics teams compete at the NCAA Division II level in the Great Lakes Valley Conference. There are 100+ Maryville student organizations with more than 2,500 events held on campus each year. Maryville's 130-acre campus is conveniently located within 20 minutes of downtown St. Louis.

Missouri Baptist University

St. Louis, Missouri
 Founded: 1964
 Affiliation: Missouri Baptist Convention
 Enrollment Headcount: 5231 (2665 FTE)
 Student-faculty ratio: 19 to 1
 Average ACT (freshman): 21

Missouri Baptist University is a Christ-centered, liberal arts institution in Saint Louis, Mo. MBU currently offers more than 70 programs of study leading to professional certificates, undergraduate degrees, and graduate degrees in an environment emphasizing academic excellence while maintaining a biblically based Christian perspective. MBU's core purpose is to teach, empower and inspire students for service and lifelong learning.

Along with its beautiful 66-acre West St. Louis County campus, MBU has regional learning centers throughout the St. Louis region and Illinois. In addition, the University currently offers nearly 30 degrees entirely online. In 2022, the University achieved record freshman enrollment, and was recently named the 7th-most inspiring university according to peers, a ranking published in The Wall Street Journal and Times Higher Education's top US college rankings. The University was also recognized in 2022 as a Top Workplace by the St. Louis Post-Dispatch for the 10th consecutive year, making MBU the only higher education institution in the region to achieve such a mark.



Park University
<p>Parkville, Missouri</p> <p>Founded: 1875</p> <p>Affiliation: Independent</p> <p>Enrollment Headcount: 11766 (5685 FTE)</p> <p>•Student-faculty ratio: 15:1</p> <p>Average ACT (freshman): 21.1</p>

Rockhurst University
<p>Kansas City, Missouri</p> <p>Founded: 1910</p> <p>Affiliation: Catholic, Jesuit</p> <p>Enrollment Headcount: 3,405 (2,477 FTE)</p> <p>Student-Faculty Ratio: 13 to 1</p> <p>Average ACT (freshman): 3.69</p>

Southwest Baptist University
<p>Bolivar, Missouri</p> <p>Founded: 1878</p> <p>Affiliation: Southern Baptist (Missouri Baptist Convention)</p> <p>Enrollment Headcount: 3039 (2719 FTE)</p> <p>Student-faculty ratio: 12 to 1</p> <p>Average ACT (freshman): 22</p>

Park University, a comprehensive, independent institution that is a national leader in higher education, serves an ethnically diverse student population and non-traditional adult learners at 41 campus centers across the U.S., including 31 on military installations, and online worldwide.

Park continues to increase access to higher education by offering the quality undergraduate and graduate degrees students desire at locations, times, and delivery formats that best serve their needs. The University has been ranked among the top private colleges/universities in the country for adult learners as well, as for annual return on investment, and it is consistently ranked among the top least expensive private schools in the country.

Providing such access has developed considerable diversity among the student population, with nearly 525 international students from 70 countries and 58 percent student representation from racial, ethnic and cultural groups typically underrepresented in colleges and universities. In addition, extracurricular activities and championship-caliber NAIA athletic programs complement Park's outstanding scholastic programs.

Park University maintains a long-standing relationship with the U.S. military, for which it has been recognized as one of the largest providers of online undergraduate education to military learners worldwide. Since 2009, Park has received international recognition each year by Victory Media as one of its top military friendly colleges and universities. In addition, Park is among the top 10 "Best for Vets" private colleges/universities in the country as named by various publications.

Rockhurst University is a Catholic, Jesuit institution with more than 100 years of experience educating students in the cultural heart of Kansas City. The University's approach is rooted in the Jesuit tradition of transformative education, inspiring students to think and communicate effectively, lead others, foster a love of lifelong learning, serve their communities, and find God in all things.

With close to 3,500 students and offering more than 70 undergraduate and graduate programs of study, Rockhurst University provides the perfect college setting. US News & World Report ranks Rockhurst among the top regional universities in the Midwest, and SmartAsset has ranked it one of the best values among colleges and universities in Missouri. Rockhurst offers a thriving campus filled with activity and energy outside the classroom. With nearly 50 organizations ranging from Greek life to academic-interest clubs, athletics, campus ministry offerings and service opportunities, students are sure to find many ways to express their individuality and build their leadership skills.

Rockhurst students are challenged, inspired, and assisted by exceptional faculty. Students experience rigorous academics within a tight-knit community that wants them to succeed. That's why 97.2% of Rockhurst graduates report being employed or accepted into graduate school within six months of graduation.

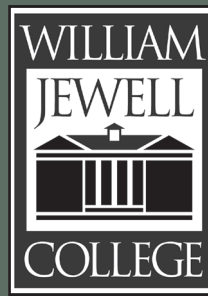
Southwest Baptist University (SBU) is a private, Christ-centered university located in the heart of southwest Missouri with four campuses and online. SBU has been providing quality Christian education since 1878 and is one of the top Christian universities in the nation. Whether looking for traditional undergraduate, graduate, or doctoral degrees or online degrees through SBU Worldwide, Southwest Baptist University has something for everyone.

At SBU, students receive an education rooted in both practical and theoretical curriculum while also receiving faith integration into their studies. Through SBU's extensive network of students, faculty, alumni, churches, and other organizations, students are equipped to be the hands and feet of Jesus as they meet the challenges of the modern world.

Southwest Baptist University is also highly regarded for its social mobility, college of distinction, and affordability. Join the thousands of students, alumni, and faculty who have benefited from the excellent education SBU provides. Choose Southwest Baptist University today where students are fully prepared to serve and confidently ready to lead!



**WESTMINSTER
COLLEGE**
THE POWER IN PURPOSE™



Westminster College

Fulton, Missouri
 Founded: 1851
 Affiliation: Presbyterian
 Enrollment Headcount: 614 (602 FTE)
 Student-faculty ratio: 11 to 1
 Average ACT (freshman): 22

Small college. Big impact. That is the essence of Westminster College, a historic and transformative liberal arts college where faculty, staff, and alumni have united since 1851, offering students a quality education and preparing them to be successful in all aspects of their lives.

Internationally recognized as the home of America's National Churchill Museum, Westminster continues to attract worldwide attention following Winston Churchill's famous "Iron Curtain" speech on its campus in 1946. Today the College remains a backdrop for legendary lectures by luminaries such as former U.S. Secretary of State Dr. Madeleine Albright, former Soviet President Mikhail Gorbachev, former President George H.W. Bush, and former Prime Minister of Great Britain Margaret Thatcher, to name just a few.

Renowned as one of the nation's top private colleges for providing a measurable return on investment, Westminster boasts a 97 percent placement rate, a national top 15 percent ranking by Payscale.com for graduate earnings and the status as the only college in Missouri ranked by U.S. News & World Report as a National Liberal Arts College.

Students' profound transformational experiences are demonstrated by the College's passionate and prestigious alumni community. Many alumni are leaders in their fields — members of Congress, heads of major corporations, Supreme Court justices, best-selling writers, physicians, attorneys, business owners, and philanthropists.

William Jewell College

Liberty, Missouri
 Founded: 1849
 Affiliation: None
 Enrollment Headcount: 853 (848 FTE)
 Student-faculty ratio: 11 to 1
 Average ACT (freshman): 23

William Jewell College's commitment to cultivating critical thinkers in pursuit of meaningful lives is woven into the living and learning community and is the basis of the Critical Thought and Inquiry Core Curriculum and academic programs, including nursing, civil engineering, data science, music and nonprofit leadership. Students are accepted to top graduate programs and have received grants and scholarships including Fulbright, Goldwater, Rhodes, Truman, National Institutes of Health, National Science Foundation and Teach for America.

Among Jewell's distinctive programs are the Oxbridge Honors Program with a year of study at Oxford, graduate diplomas in voice and choral conducting, the Pryor Leadership Program and a major in critical thinking. A national award-winning Concert Choir and Debate Team, the Harriman-Jewell performing art series, 26 varsity sports and the Honors Institute in Critical Thinking demonstrate the depth of opportunities available to students, while Jewell's proximity to Kansas City provides endless cultural and career options.

Consistently ranked among America's top colleges by U.S. News & World Report, The Princeton Review, Forbes, Washington Monthly and Wall Street Journal/Times Higher Education, Jewell is cited for its overall value, academic rigor, small class sizes, high graduation rates and generous financial aid.

William Woods University

Fulton, Missouri
 Founded: 1870
 Affiliation: Disciples of Christ
 Enrollment Headcount: 1508 (971 FTE)
 Student-faculty ratio: 9 to 1
 Average ACT (freshman): 22.7

William Woods University has been consistently ranked over the past decade as one of the top 100 regional universities in the Midwest by U.S. News. Founded in 1870, the University expanded its mission in the 1990's by adding online and advanced degree programs to better address the coeducational needs of working adults. Headquartered on 200 scenic acres in Fulton, Missouri with classrooms in Columbia and cohorts throughout the state, William Woods is a coeducational, independent, professions-oriented, liberal arts-based institution. It is also an official Military Friendly School, working closely with military and veteran students and their families.

Unique undergraduate programs of study include a four-year American Sign Language program, an internationally recognized Equestrian Studies program, Criminal Justice, Cybersecurity and the Show-Me GOLD program, which prepares young men and women to become commissioned officers in the Missouri National Guard.

In addition, William Woods offers undergraduate and graduate programs for working adults, including a Master of Business Administration, Master in Healthcare Administration, Master of Education, Education Specialist, and Doctorate of Education in Leadership. Several of these programs are offered where the bachelor's and master's degrees are earned in five years. The University also launched Woods Global in 2022, a significant increase in online undergraduate degree programs.

MISSOURI

COLLEGES FUND INC.

SINCE 1952

